



**Oakleigh Road North, Whetstone, London, N20**  
**Chain Free £535,000 Freehold**

**Anthony Webb**  
ESTATE AGENTS

# Oakleigh Road North, Whetstone, London, N20

A CHAIN FREE Victorian three bedroom mid terrace house with a through lounge, kitchen, ground floor bathroom, three good size bedrooms and rear garden. The property **REQUIRES UPDATING**.

Oakleigh Road North is a convenient location within only a short walk to the local shops which include a Tesco Express, there are bus stops giving easy access to Arnos Grove Piccadilly line tube, New Southgate over ground station in one direction and to Oakleigh Park over ground or Totteridge & Whetstone Northern line tube.

Hallway with laminate floor • Through Lounge with bay window, laminate floor and fitted storage units • Kitchen with tiled floor and door to side return/garden • First floor landing with access to loft and storage cupboard • Two double bedrooms and one single bedroom with an en-suite w.c • Double glazing • Gas central heating • Rear garden measuring 40ft x 15ft.

Barnet council tax band D

- Three bedrooms
- Victorian terrace house
- Through lounge
- Kitchen
- Ground floor bathroom
- Double glazing/gas central heating
- Chain free
- Rear garden



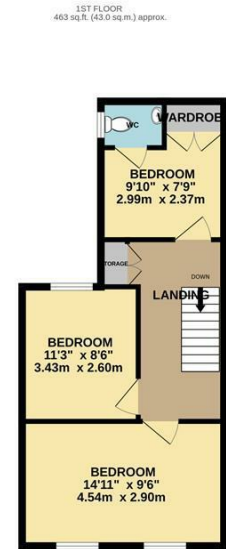
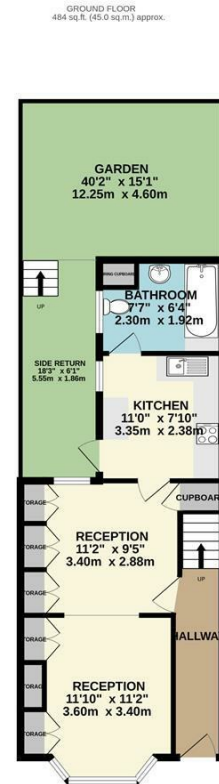


# Oakleigh Road North Whetstone London N20 0RH

Tenure: Freehold  
Gross Internal Area: 947.00 sq ft



Energy Efficiency Rating		Current	Potential
Very energy efficient - lower running costs			
(92 plus) A			89
(81-91) B			
(69-80) C		67	
(55-68) D			
(39-54) E			
(17-38) F			
(1-20) G			
Not energy efficient - higher running costs			
England & Wales		EU Directive 2002/91/EC	
Environmental Impact (CO <sub>2</sub> ) Rating		Current	Potential
Very environmentally friendly - lower CO <sub>2</sub> emissions			
(92 plus) A			
(81-91) B			
(69-80) C			
(55-68) D			
(39-54) E			
(17-38) F			
(1-20) G			
Not environmentally friendly - higher CO <sub>2</sub> emissions			
England & Wales		EU Directive 2002/91/EC	



TOTAL FLOOR AREA: 947 sq.ft. (88.0 sq.m.) approx.  
While every attempt has been made to ensure the accuracy of the floorplan contained here, measurements of doors, windows, rooms and any other items are approximate and no responsibility is taken for any error, omission or mis-statement. This plan is for illustrative purposes only and should be used as a guide only by any prospective purchaser. The services, systems and appliances shown have not been tested and no guarantee as to their operability or efficiency can be given.  
Made with Metropix ©2023

Property particulars as supplied by Anthony Webb Estate Agents are set out as a general outline in accordance with the Property Misdescriptions Act (1991) only for the guidance of intending purchasers of lessees, and do not constitute any part of an offer or contract. Details are given without any responsibility, and any intending purchasers, lessees or third parties should not rely on them as inspection or otherwise as to the correctness of each of them. We have not carried out a structural survey and the services, appliances and specific fittings have not been tested. All photographs, measurements, floor plans and distances referred to are given as a guide only and should not be relied upon for the purchase of carpets or any other fixtures statements or representations of fact, but must satisfy themselves by or of fittings, gardens, roof terraces, balconies and communal gardens as well as tenure and lease details cannot have their accuracy guaranteed for intending purchasers. Lease details, service ground rent (where applicable) are given as a guide only and should be checked and confirmed by your solicitor prior to exchange of contracts. No person in the employment of Anthony Webb has any authority to make any representation or warranty whatever in relation to this property.

348 Green Lanes, Palmers Green, London N13 5TJ  
020 8882 7888  
palmersgreen@anthonywebb.co.uk  
anthonywebb.co.uk

**Anthony Webb**  
ESTATE AGENTS